

Bellapart

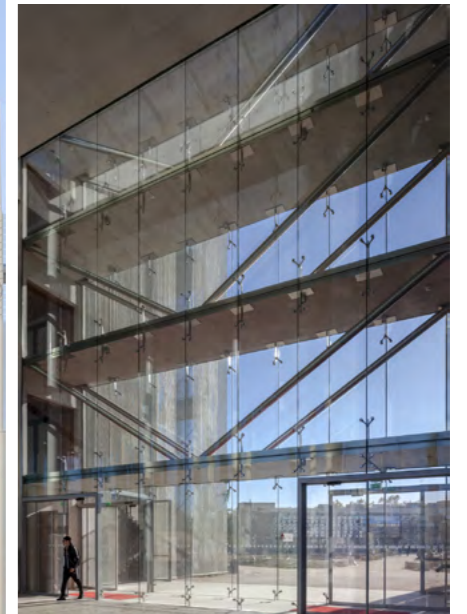
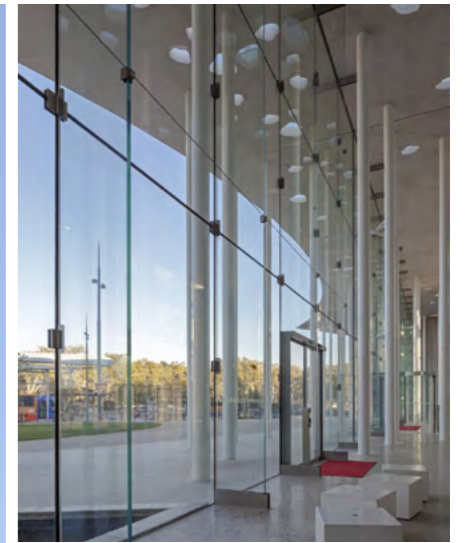


School of Medicine - University of Montpellier

Bellapart

Bellapart, s.a.u.
Ctra. de la Parcel·lària, 32 - 17178 Les Preses
Catalonia (Spain) T. + 34 972 27 50 01
www.bellapart.com bellapart@bellapart.com





SCHOOL OF MEDICINE - UNIVERSITY OF MONTPELLIER

The University of Montpellier opened last September the new School of Medicine designed by the architect François Fontès.

It represents a highly integrated innovative offer in its field for the country: Education, Research, Treatment and Innovation.

The imposing and elegant entrance of this emblematic building, measuring 65 metres long and 12.7 meters high, is achieved by means of a frameless glass-fin façade system. The three secondary entrances comprise highly transparent façades by

using the same structural glass solution. Setting blocks are provided on the lower edge of each façade glass panel, measuring 3.8m x 2.8m, to resist the component of the weight acting in the plane of the glass. In horizontal direction, the panels are supported by means of patch-fittings connected to the titanium inserts embedded in the full-height glass fins.

The structural system is designed to resist seismic actions and to accommodate the displacement of the main structure under an earthquake scenario. The stability to

lateral buckling and under seismic loads is guaranteed by a system of cables and rods which transmits the in-plane forces to the main structure. Special consideration must be given to the use of glass in such structural elements. Loading tests on mock-ups were carried out in order to ensure the adequate performance and redundancy.

The south glass wall of the Hall is suspended from the concrete floor slabs by means of a bolted structural glass system emphasizing the idea of transparency. The

three glass roof lights use the same glazing system to enhance light and space within the building.

Client
Region Languedoc Roussillon
Architect
Fontès Architecture
Engineering & Construction
Bellapart